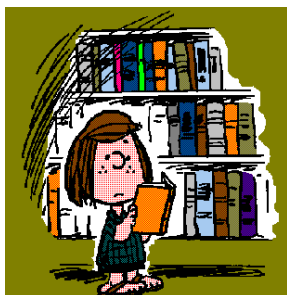


2014-2015 Toledo Public Library Annual Survey

Your Librarians

Jennifer Bledsoe—Director
Sheri McFate—Assistant Librarian
Becky Thiessen—Library Assistant
Deb Kern—Library Assistant



Income

\$88,383 General Fund
\$7,659 County Funds
\$2,999 Direct State Aid
\$3,600 Fines and Fees
\$4,450.00 Grants Awarded

Expenses

\$75,971 All Staff & Custodian Wages
\$6,852 All Print, DVD and Magazines
\$1,510 Audio Books and eBook database
\$500 Staff Training
\$3,300 Operating Supplies
\$15,394 All Operating Expenses

DATABASES

EBSCOhost
Tumblebooks for kids
BRIDGES audio and eBooks
Learning Library Express
Ancestry Library Edition

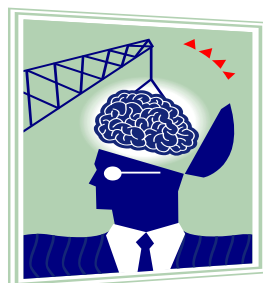
Circulation Facts..

Adult Items	6,797
Youth Items	541
Children's Items	8,224
Movie Items	4,854
Audio Items	1,368
Magazines	1,081
Digital Books	561
Other Items	325
Total circulation	23,751

Toledo Circulation	13,158
County circulation	4,528
Open Access circulation	4,059
Other	2,006

Other Facts

Total Patrons	3,738
Patrons Added FY 15	323
Total Computer users	4,214
Total library visits	26,971
Meeting Room Use	69
Children's Programs	114
Total Attendance	1,544
YA & Adult Programs	40
Total Attendance	289
Volunteers	74
Volunteer Hours	155



“Knowledge is free at the library- Just bring your own container”

Unknown Author

CONTACT US tpl@toledo.lib.ia.us 641-484-3362

www.toledo.lib.ia.us

